

M5 Junction 10 Improvements Scheme

Speed Limits and Traffic Regulations Plans – Part 2 TR010063 - APP 2.14

Regulation 5 (2) (o)
Planning Act 2008
Infrastructure Planning (Applications: Prescribed Forms and Procedure) Regulations 2009

Volume 2
December 2023

THIS PAGE IS LEFT INTENTIONALLY BLANK

**Infrastructure Planning
Planning Act 2008**

**The Infrastructure Planning
(Applications: Prescribed Forms and Procedure)
Regulations 2009**

**The M5 Junction 10 improvements scheme
Development Consent Order 202[X]**

Speed Limits and Traffic Regulation Plans – Part 2

Regulation Number:	Regulation (5)(o)
Planning Inspectorate Scheme Reference	TR010063
Application Document Reference	TR010063/APP/2.14Part 2
Author:	M5 junction 10 Improvements Scheme Project Team

Version	Date	Status of Version
Rev 0	December 2023	DCO Application

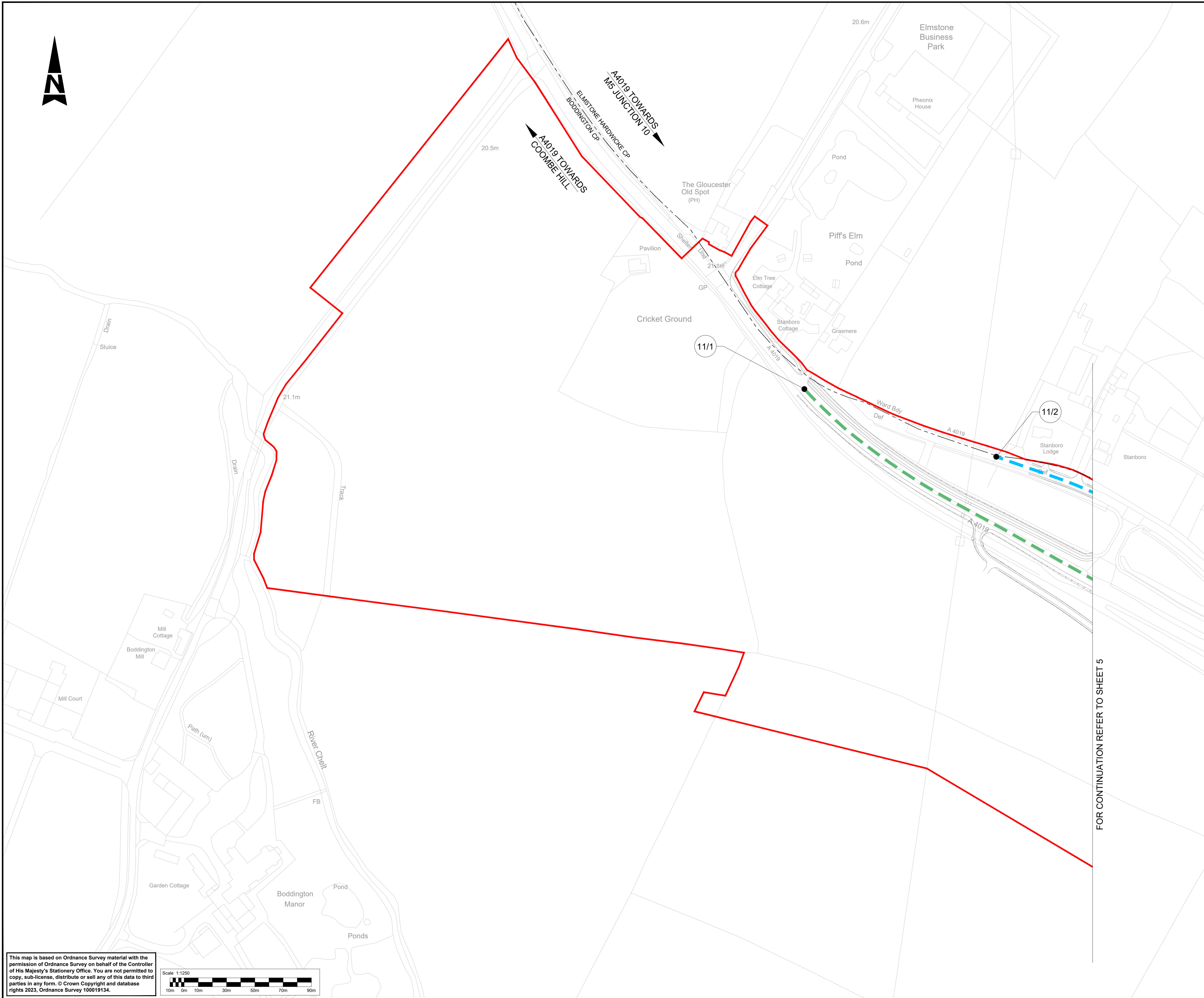
1. Schedule of Plans included in this application document

1.1. List of drawings in Part 1

Document Title	Document Number	Revision
Speed Limits and Traffic Regulations Plans Regulation 5(2)(o)- Key Plan	TR010063/APP/2.14	C01
Speed Limits and Traffic Regulations Plans Regulation 5(2)(o)- Sheet 1 of 16	TR010063/APP/2.14	C01
Speed Limits and Traffic Regulations Plans Regulation 5(2)(o)- Sheet 2 of 16	TR010063/APP/2.14	C01
Speed Limits and Traffic Regulations Plans Regulation 5(2)(o)- Sheet 3 of 16	TR010063/APP/2.14	C01
Speed Limits and Traffic Regulations Plans Regulation 5(2)(o)- Sheet 4 of 16	TR010063/APP/2.14	C01
Speed Limits and Traffic Regulations Plans Regulation 5(2)(o)- Sheet 5 of 16	TR010063/APP/2.14	C01
Speed Limits and Traffic Regulations Plans Regulation 5(2)(o)- Sheet 6 of 16	TR010063/APP/2.14	C01
Speed Limits and Traffic Regulations Plans Regulation 5(2)(o)- Sheet 7 of 16	TR010063/APP/2.14	C01
Speed Limits and Traffic Regulations Plans Regulation 5(2)(o)- Sheet 8 of 16	TR010063/APP/2.14	C01
Speed Limits and Traffic Regulations Plans Regulation 5(2)(o)- Sheet 9 of 16	TR010063/APP/2.14	C01
Speed Limits and Traffic Regulations Plans Regulation 5(2)(o)- Sheet 10 of 16	TR010063/APP/2.14	C01

1.2. List of drawings in Part 2

Document Title	Document Number	Revision
Speed Limits and Traffic Regulations Plans Regulation 5(2)(o)- Sheet 11 of 16	TR010063/APP/2.14	C01
Speed Limits and Traffic Regulations Plans Regulation 5(2)(o)- Sheet 12 of 16	TR010063/APP/2.14	C01
Speed Limits and Traffic Regulations Plans Regulation 5(2)(o)- Sheet 13 of 16	TR010063/APP/2.14	C01
Speed Limits and Traffic Regulations Plans Regulation 5(2)(o)- Sheet 14 of 16	TR010063/APP/2.14	C01
Speed Limits and Traffic Regulations Plans Regulation 5(2)(o)- Sheet 15 of 16	TR010063/APP/2.14	C01
Speed Limits and Traffic Regulations Plans Regulation 5(2)(o)- Sheet 16 of 16	TR010063/APP/2.14	C01

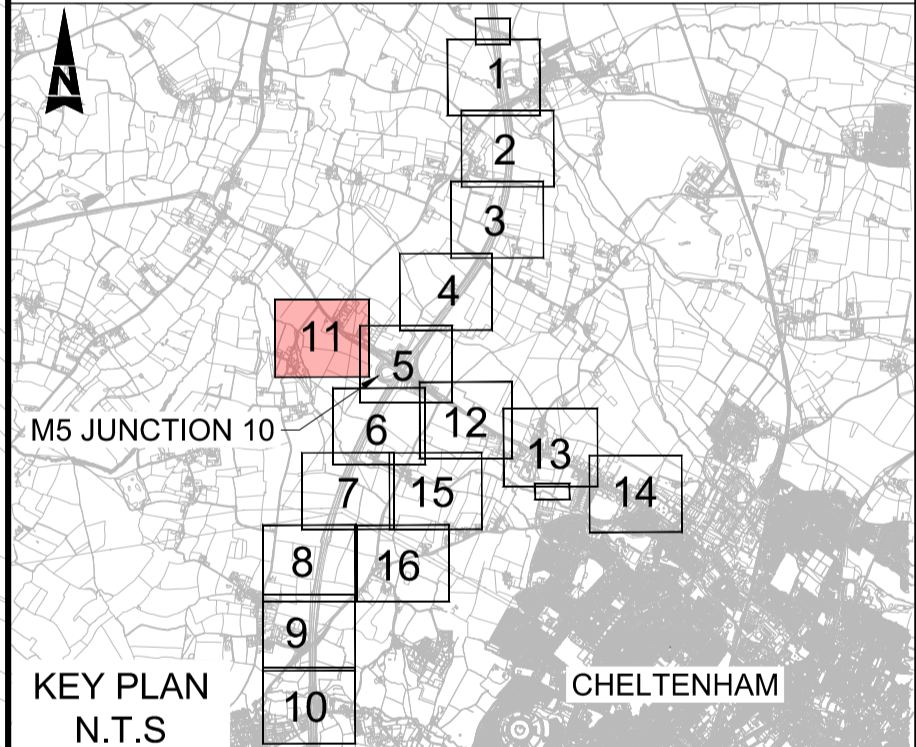


NOTES:

1. PROPOSED SPEED LIMITS ARE APPLICABLE TO NEW ROADS AND REALIGNED CARRIAGEWAYS/SLIP ROADS.
2. THE SPEED LIMITS AND TRAFFIC REGULATIONS PLANS SHOULD BE READ IN CONJUNCTION WITH THE DEVELOPMENT CONSENT ORDER AND OTHER APPLICATION PLANS.

KEY

- DEVELOPMENT CONSENT ORDER (DCO) LIMITS
- PROPOSED NATIONAL SPEED LIMIT ON MOTORWAY
- PROPOSED 30MPH SPEED LIMIT
- PROPOSED 40MPH SPEED LIMIT
- PROPOSED 50MPH SPEED LIMIT
- PARISH BOUNDARY
- REFERENCE LABEL FOR REVOCATIONS AND VARIATIONS OF EXISTING TRAFFIC REGULATION ORDERS SCHEDULE
- REFERENCE LABEL FOR TRAFFIC REGULATION MEASURES SCHEDULE
- REFERENCE LABEL FOR SPEED LIMIT SCHEDULE
- PROHIBITION OF U TURNS
- BUS LANE ORDER EXTENTS
- TRAFFIC REGULATION ORDER TO BE REVOKED / VARIED
- MAINLINE CHAINAGE

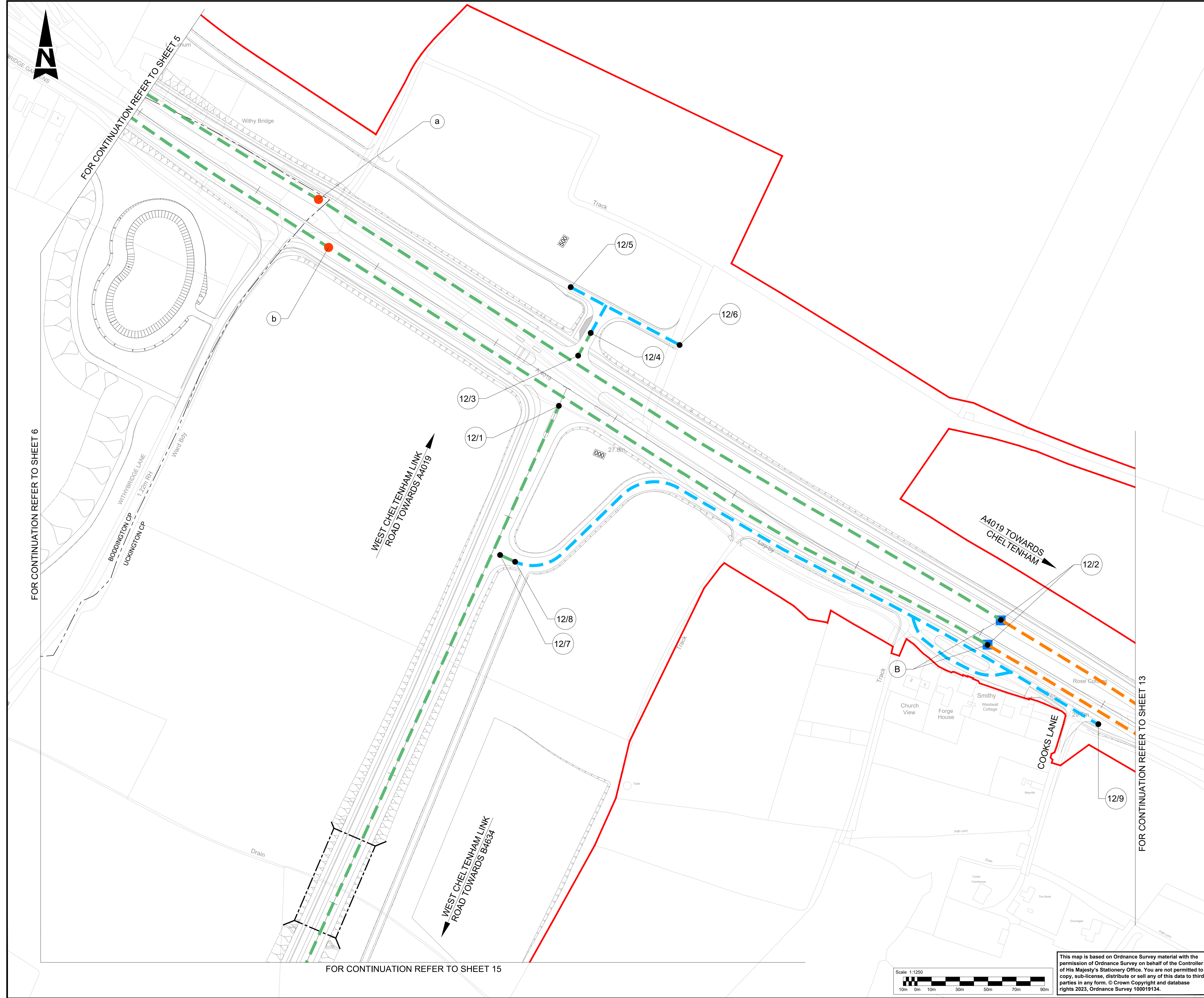


FOR CONTINUATION REFER TO SHEET 5

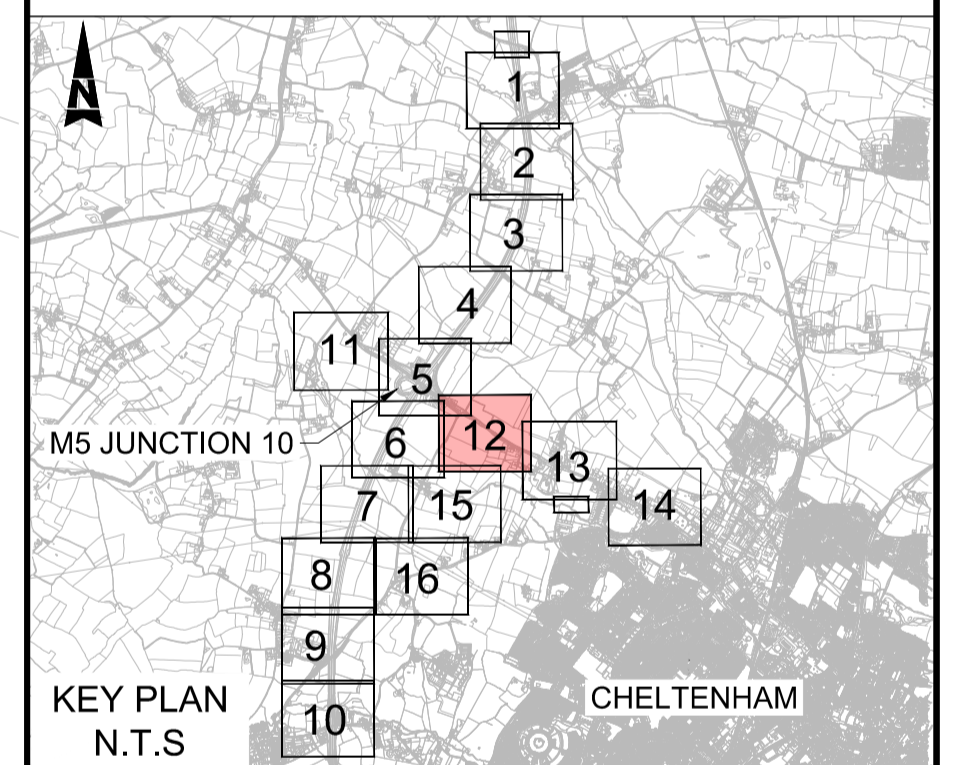
Description						
Status	Revision	Drawn	Checked	Reviewed	Authorised	Issue Date
Description						
Status	Revision	Drawn	Checked	Reviewed	Authorised	Issue Date
Description						
Status	Revision	Drawn	Checked	Reviewed	Authorised	Issue Date
Description						
FIRST SUBMISSION						
Status	Revision	Drawn	Checked	Reviewed	Authorised	Issue Date
A1	C01	NKRP	CJ	HC	BM	18/10/23
Drawing Suitability						Status
APPROVED - PUBLISHED						A1
Project Title						
M5 Junction 10 Improvements Scheme						
Drawing Title						
SPEED LIMITS AND TRAFFIC REGULATIONS PLANS REGULATION 5(2)(o) SHEET 11 OF 16						
Drawing Number						
TR010063/APP/2.14						
Original Size	A1	Scale	1:1250	Project Ref. No.	5197035	Sheet
						11 of 16
				Rev.	C01	

This map is based on Ordnance Survey material with the permission of Ordnance Survey on behalf of the Controller of His Majesty's Stationery Office. You are not permitted to copy, sub-license, distribute or sell any of this data to third parties in any form. © Crown Copyright and database rights 2023, Ordnance Survey 100019134.



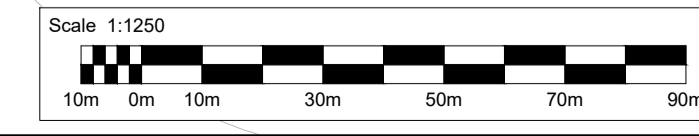


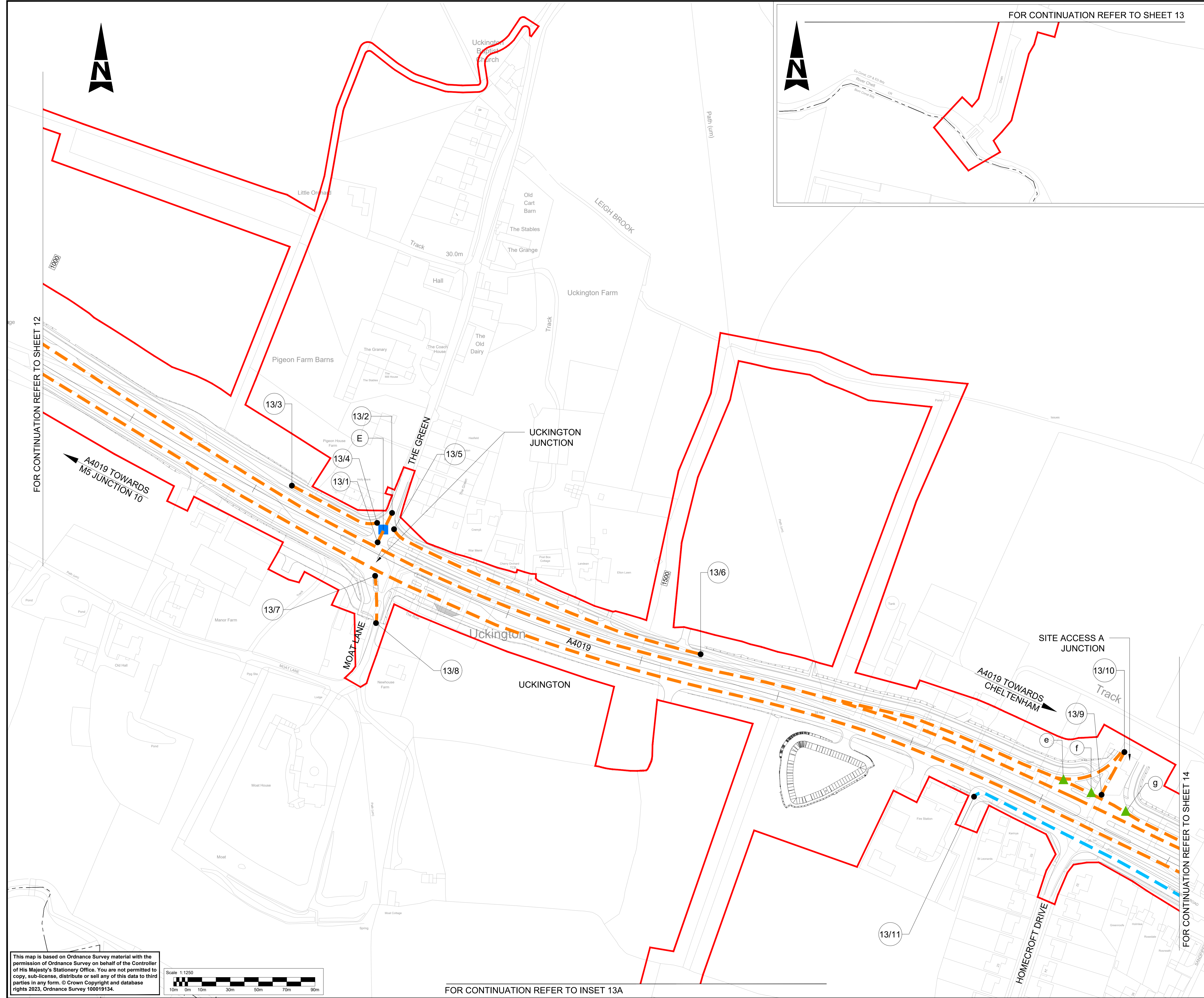
- NOTES:**
- PROPOSED SPEED LIMITS ARE APPLICABLE TO NEW ROADS AND REALIGNED CARRIAGEWAYS/SLIP ROADS.
 - THE SPEED LIMITS AND TRAFFIC REGULATIONS PLANS SHOULD BE READ IN CONJUNCTION WITH THE DEVELOPMENT CONSENT ORDER AND OTHER APPLICATION PLANS.
- KEY**
- DEVELOPMENT CONSENT ORDER (DCO) LIMITS
 - PROPOSED NATIONAL SPEED LIMIT ON MOTORWAY
 - PROPOSED 30MPH SPEED LIMIT
 - PROPOSED 40MPH SPEED LIMIT
 - PROPOSED 50MPH SPEED LIMIT
 - PARISH BOUNDARY
 - A REFERENCE LABEL FOR REVOCATIONS AND VARIATIONS OF EXISTING TRAFFIC REGULATION ORDERS SCHEDULE
 - a REFERENCE LABEL FOR TRAFFIC REGULATION MEASURES SCHEDULE
 - 4r REFERENCE LABEL FOR SPEED LIMIT SCHEDULE
 - PROHIBITION OF U TURNS
 - ▲ BUS LANE ORDER EXTENTS
 - TRAFFIC REGULATION ORDER TO BE REVOKED / VARIED
 - XXXX MAINLINE CHAINAGE



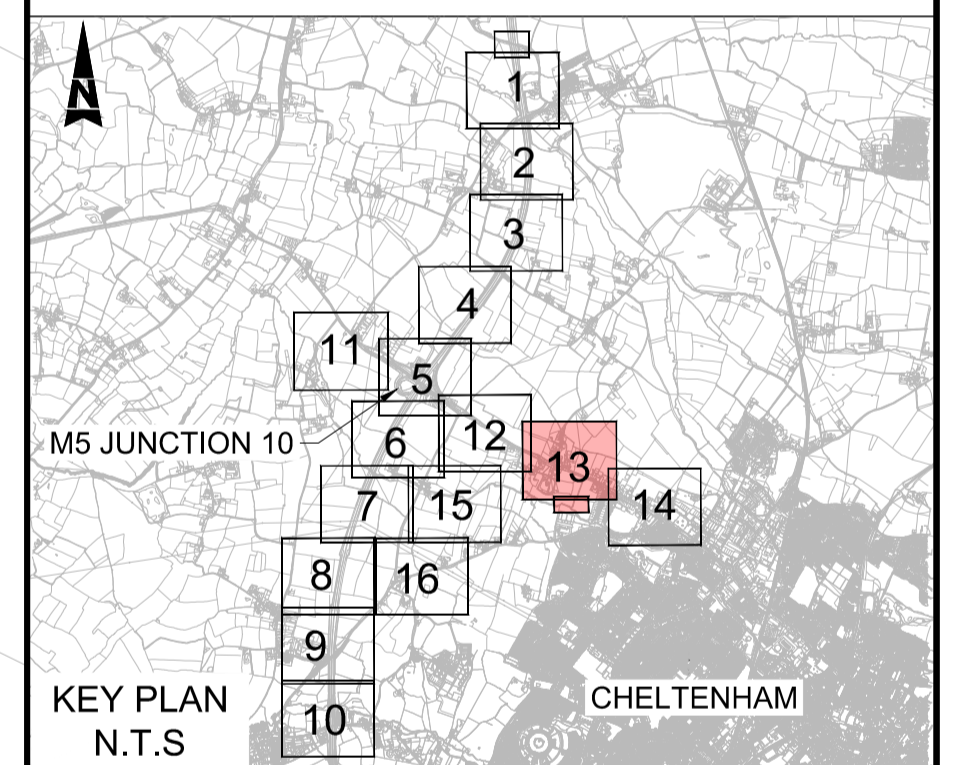
Description						
Status	Revision	Drawn	Checked	Reviewed	Authorised	Issue Date
Description						
Status	Revision	Drawn	Checked	Reviewed	Authorised	Issue Date
Description						
Status	Revision	Drawn	Checked	Reviewed	Authorised	Issue Date
Description						
Description						
FIRST SUBMISSION						
Status	Revision	Drawn	Checked	Reviewed	Authorised	Issue Date
A1	C01	NKRP	CJ	HC	BM	18/10/23
Drawing Suitability						Status
APPROVED - PUBLISHED						A1
Project Title						
M5 Junction 10 Improvements Scheme						
Drawing Title						
SPEED LIMITS AND TRAFFIC REGULATIONS PLANS REGULATION 5(2)(o) SHEET 12 OF 16						
Drawing Number						
TR010063/APP/2.14						
Original Size:	A1	Scale:	1:1250	Project Ref. No.:	5197035	Sheet: 12 of 16 Rev: C01

This map is based on Ordnance Survey material with the permission of Ordnance Survey on behalf of the Controller of His Majesty's Stationery Office. You are not permitted to copy, sub-license, distribute or sell any of this data to third parties in any form. © Crown Copyright and database rights 2023, Ordnance Survey 100019134.



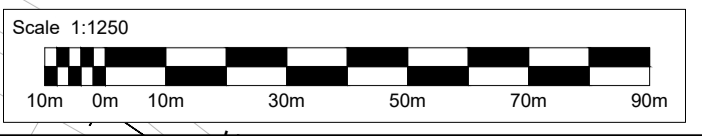


- NOTES:**
- PROPOSED SPEED LIMITS ARE APPLICABLE TO NEW ROADS AND REALIGNED CARRIAGEWAYS/SLIP ROADS.
 - THE SPEED LIMITS AND TRAFFIC REGULATIONS PLANS SHOULD BE READ IN CONJUNCTION WITH THE DEVELOPMENT CONSENT ORDER AND OTHER APPLICATION PLANS.
- KEY**
- DEVELOPMENT CONSENT ORDER (DCO) LIMITS
 - PROPOSED NATIONAL SPEED LIMIT ON MOTORWAY
 - PROPOSED 30MPH SPEED LIMIT
 - PROPOSED 40MPH SPEED LIMIT
 - PROPOSED 50MPH SPEED LIMIT
 - PARISH BOUNDARY
 - REFERENCE LABEL FOR REVOCATIONS AND VARIATIONS OF EXISTING TRAFFIC REGULATION ORDERS SCHEDULE
 - REFERENCE LABEL FOR TRAFFIC REGULATION MEASURES SCHEDULE
 - REFERENCE LABEL FOR SPEED LIMIT SCHEDULE
 - PROHIBITION OF U TURNS
 - BUS LANE ORDER EXTENTS
 - TRAFFIC REGULATION ORDER TO BE REVOKED / VARIED
 - MAINLINE CHAINAGE

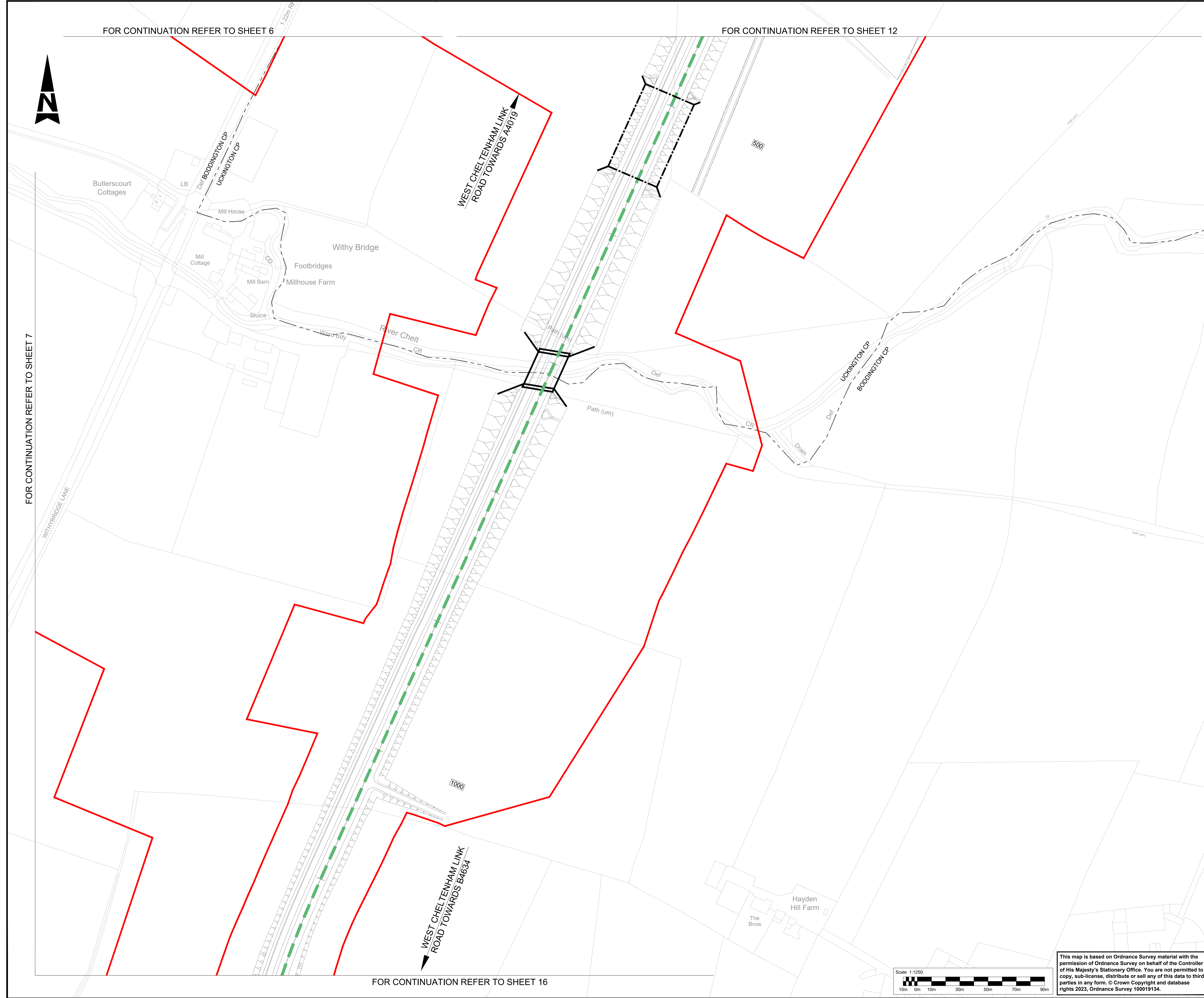


Description									
Status	Revision	Drawn	Checked	Reviewed	Authorised	Issue Date			
Description									
Status	Revision	Drawn	Checked	Reviewed	Authorised	Issue Date			
Description									
Status	Revision	Drawn	Checked	Reviewed	Authorised	Issue Date			
Description									
FIRST SUBMISSION									
Status	Revision	Drawn	Checked	Reviewed	Authorised	Issue Date			
A1	C01	NKRP	CJ	HC	BM	18/10/23			
Drawing Suitability						Status			
APPROVED - PUBLISHED						A1			
Project Title									
M5 Junction 10 Improvements Scheme									
Drawing Title									
SPEED LIMITS AND TRAFFIC REGULATIONS PLANS REGULATION 5(2)(o) SHEET 13 OF 16									
Drawing Number									
TR010063/APP/2.14									
Original Size	A1	Scale	1:1250	Project Ref. No.	5197035	Sheet	13 of 16	Rev.	C01

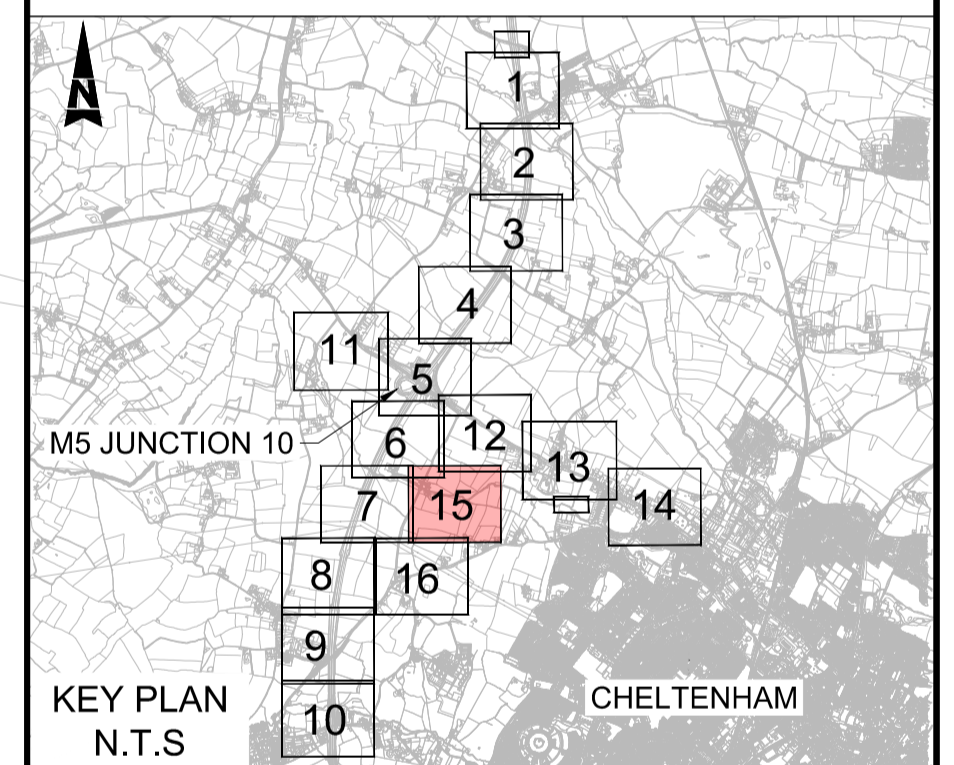
This map is based on Ordnance Survey material with the permission of Ordnance Survey on behalf of the Controller of His Majesty's Stationery Office. You are not permitted to copy, sub-license, distribute or sell any of this data to third parties in any form. © Crown Copyright and database rights 2023, Ordnance Survey 100019134.



FOR CONTINUATION REFER TO INSET 13A



- NOTES:**
- PROPOSED SPEED LIMITS ARE APPLICABLE TO NEW ROADS AND REALIGNED CARRIAGEWAYS/SLIP ROADS.
 - THE SPEED LIMITS AND TRAFFIC REGULATIONS PLANS SHOULD BE READ IN CONJUNCTION WITH THE DEVELOPMENT CONSENT ORDER AND OTHER APPLICATION PLANS.
- KEY**
- DEVELOPMENT CONSENT ORDER (DCO) LIMITS
 - PROPOSED NATIONAL SPEED LIMIT ON MOTORWAY
 - PROPOSED 30MPH SPEED LIMIT
 - PROPOSED 40MPH SPEED LIMIT
 - PROPOSED 50MPH SPEED LIMIT
 - - - PARISH BOUNDARY
 - (A) REFERENCE LABEL FOR REVOCATIONS AND VARIATIONS OF EXISTING TRAFFIC REGULATION ORDERS SCHEDULE
 - (B) REFERENCE LABEL FOR TRAFFIC REGULATION MEASURES SCHEDULE
 - (4R) REFERENCE LABEL FOR SPEED LIMIT SCHEDULE
 - PROHIBITION OF U TURNS
 - ▲ BUS LANE ORDER EXTENTS
 - TRAFFIC REGULATION ORDER TO BE REVOKED / VARIED
 - XXXX MAINLINE CHAINAGE



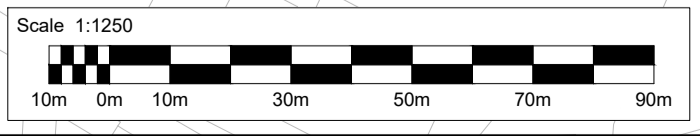
Description	Status	Revision	Drawn	Checked	Reviewed	Authorised	Issue Date						
Description													
Description													
Description													
Description													
Description													
Description													
DESCRIPTION													
FIRST SUBMISSION													
Status	A1	Revision	C01	Drawn	NKRP	Checked	CJ	Reviewed	HC	Authorised	BM	Issue Date	18/10/23
Drawing Suitability	APPROVED - PUBLISHED											Status	A1

Project Title
M5 Junction 10 Improvements Scheme

Drawing Title
SPEED LIMITS AND TRAFFIC REGULATIONS PLANS REGULATION 5(2)(o) SHEET 15 OF 16

Drawing Number
TR010063/APP/2.14

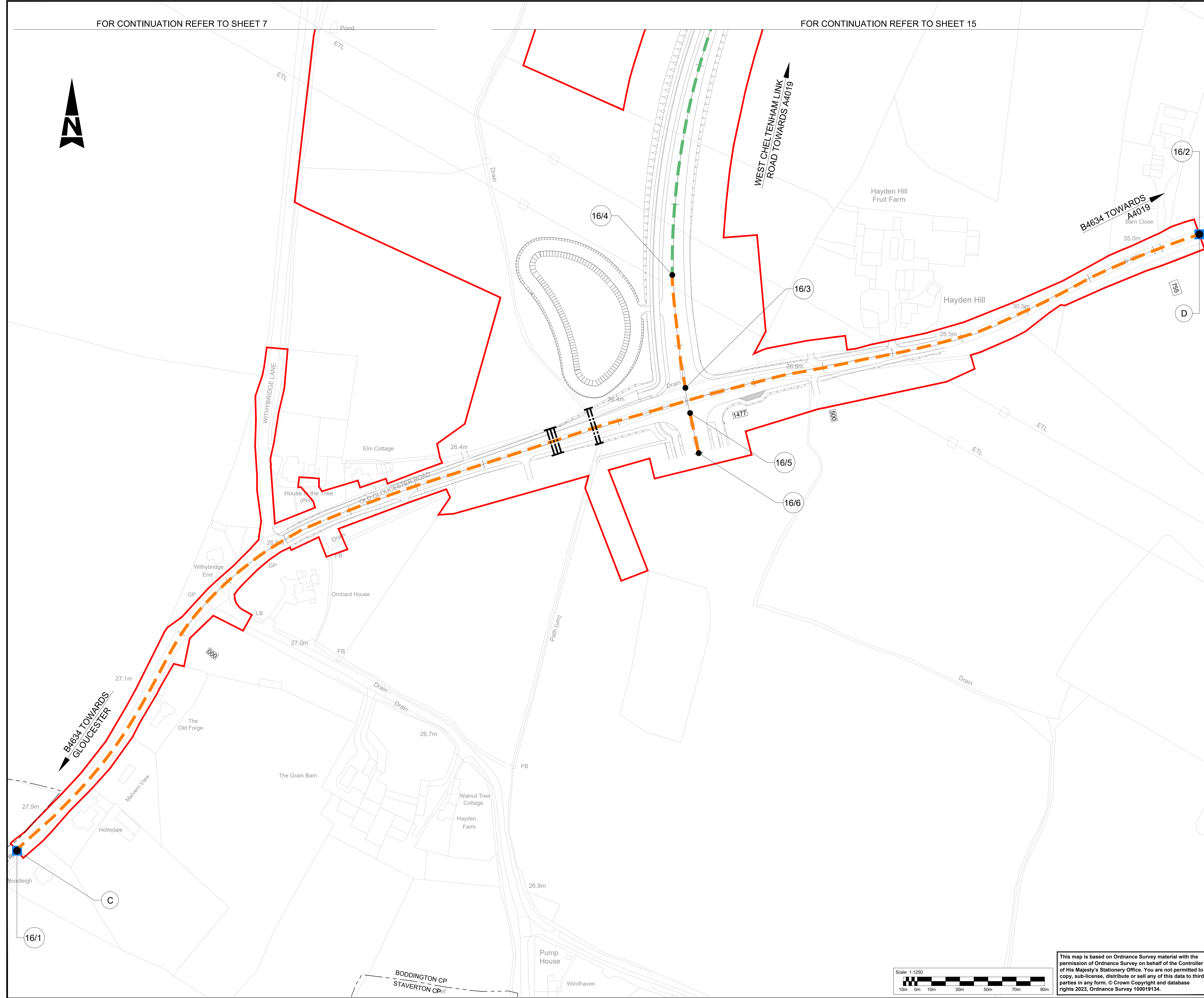
Original Size: **A1** Scale: 1:1250 Project Ref. No.: 5197035 Sheet: 15 of 16 Rev: **C01**



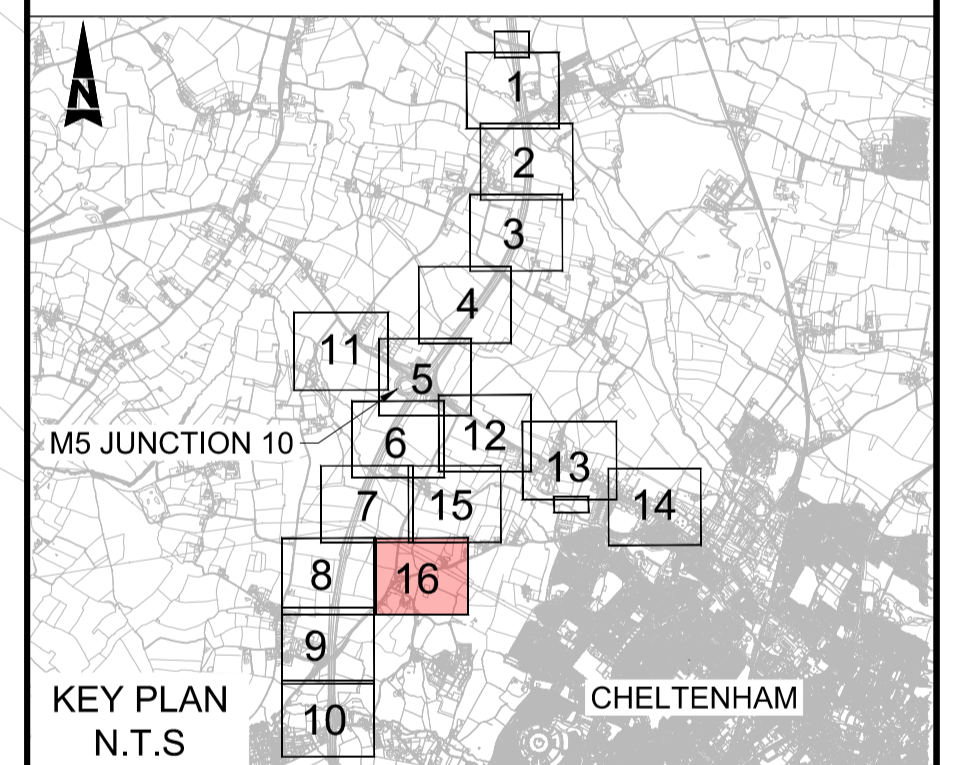
This map is based on Ordnance Survey material with the permission of Ordnance Survey on behalf of the Controller of His Majesty's Stationery Office. You are not permitted to copy, sub-license, distribute or sell any of this data to third parties in any form. © Crown Copyright and database rights 2023, Ordnance Survey 100019134.

FOR CONTINUATION REFER TO SHEET 7

FOR CONTINUATION REFER TO SHEET 15



- NOTES:**
- PROPOSED SPEED LIMITS ARE APPLICABLE TO NEW ROADS AND REALIGNED CARRIAGEWAYS/SLIP ROADS.
 - THE SPEED LIMITS AND TRAFFIC REGULATIONS PLANS SHOULD BE READ IN CONJUNCTION WITH THE DEVELOPMENT CONSENT ORDER AND OTHER APPLICATION PLANS.
- KEY**
- DEVELOPMENT CONSENT ORDER (DCO) LIMITS
 - PROPOSED NATIONAL SPEED LIMIT ON MOTORWAY
 - PROPOSED 30MPH SPEED LIMIT
 - PROPOSED 40MPH SPEED LIMIT
 - PROPOSED 50MPH SPEED LIMIT
 - PARISH BOUNDARY
 - (A) REFERENCE LABEL FOR REVOCATIONS AND VARIATIONS OF EXISTING TRAFFIC REGULATION ORDERS SCHEDULE
 - (B) REFERENCE LABEL FOR TRAFFIC REGULATION MEASURES SCHEDULE
 - (4/1) REFERENCE LABEL FOR SPEED LIMIT SCHEDULE
 - PROHIBITION OF U TURNS
 - ▲ BUS LANE ORDER EXTENTS
 - TRAFFIC REGULATION ORDER TO BE REVOKED / VARIED
 - XXXX MAINLINE CHAINAGE



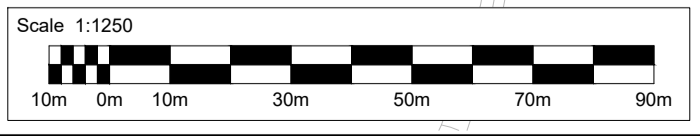
Description	Status	Revision	Drawn	Checked	Reviewed	Authorised	Issue Date
Description							
Description							
Description							
Description							
Description							
FIRST SUBMISSION	A1	C01	NKRP	CJ	HC	BM	18/10/23
Drawing Suitability	APPROVED - PUBLISHED						Status
							A1

Project Title
M5 Junction 10 Improvements Scheme

Drawing Title
SPEED LIMITS AND TRAFFIC REGULATIONS PLANS REGULATION 5(2)(o) SHEET 16 OF 16

Drawing Number
TR010063/APP/2.14

Original Scale: A1 **Scale:** 1:1250 **Project Ref. No.:** 5197035 **Sheet:** 16 of 16 **Rev.:** C01



This map is based on Ordnance Survey material with the permission of Ordnance Survey on behalf of the Controller of His Majesty's Stationery Office. You are not permitted to copy, sub-license, distribute or sell any of this data to third parties in any form. © Crown Copyright and database rights 2023, Ordnance Survey 100019134.

ATKINS

Member of the SNC-Lavalin Group

5th Floor, Block 5
Shire Hall
Bearland
Gloucester
GL1 2TH